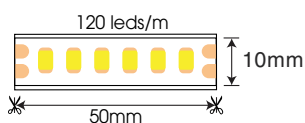


FSB-2216-IP67-L120

RoHS

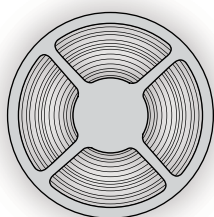


SPECIFICATION

Model Code	FSB-2216-IP67-L120
Power	8.6W/m
Input Voltage	DC24V
PCB Size	W8xT1.2mm
Size	W10xT5mm
Lenght	5m/roll
LED Source	Epistar (Taiwan)
CRI	>90
Beam Angle	120°
CCT	2300K/2700K/3000K/4000K/5000K/6000K/ Red/Green/Blue/Yellow/Orange/Pink/Purple
Lumen	710lm (4000K)
IP	IP67

PACKING

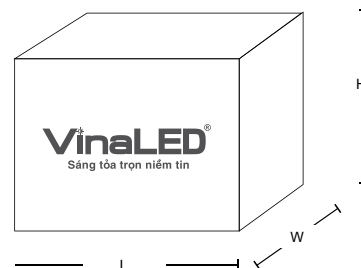
Lenght	Package size	Quantity/Cartons	Carton size
5m	L265x250mm	300m	L480xW330xH320mm



— 1 roll →

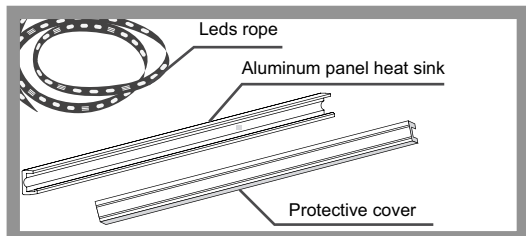


→

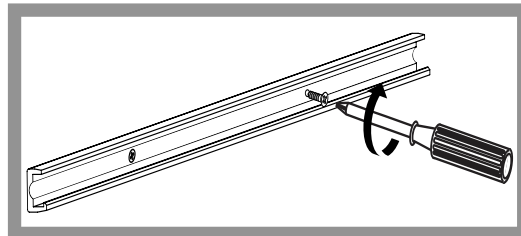


INSTALLATION INSTRUCTIONS

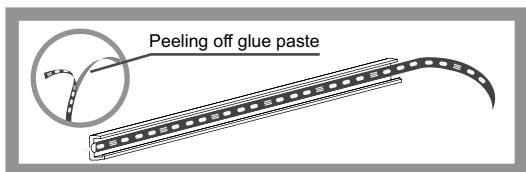
1. Prepare



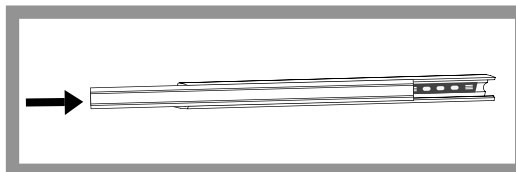
2. Aluminum panel installation heat sink



3. Paste rope led



4. Install protective cover



<p>Do not bend the led segment < 6cm</p>	<p>Do not fold the led segment</p>	<p>Do not bend the led segment on the horizontal plane</p>
<p>Do not power the led while it is in the coil</p>	<p>Do not stick any material on the led surface</p>	<p>Do not press hard on the led surface</p>
<p>Push the silicon coupling into the led segment before soldering</p>		<p>solder 2 led segments</p>
<p>Silicone reinforcement ensures tight fitting so no water gets in</p>		

Note:

- To ensure uniform brightness on the led strip, power must be supplied every 5m
- The length of the led segment does not exceed 10m to ensure uniform brightness of the entire led strip
- Use specialized accessories in welding, cutting, splicing, silicon reinforcement, led end cap
- Make sure the cutting and splicing positions must be reinforced with enough silicon so that they do not get into water
- Outdoor installation must be covered, avoid direct sunlight
- Do not come into direct contact with treated water such as swimming pool water