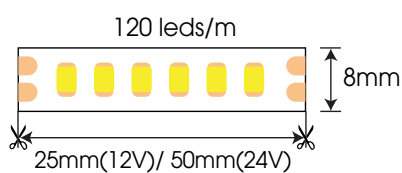


FSB-2835-IP33-L120

RoHS

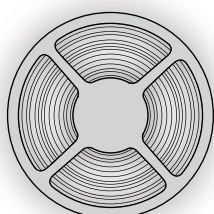


SPECIFICATION

Model Code	FSB-2835-IP33-L120
Power	8.8W
Input Voltage	12/24VDC
PCB Size	W8xT1.5mm
Cutting	25mm (12V)/ 50mm (24V)
Lenght	5m/roll
LED Source	Epistar (Taiwan)
CRI	>80
Beam Angle	120°
CCT	2300K/2700K/3000K/4000K/5000K/6000K/ Red/Green/Blue/Yellow/Orange/Pink/Purple
Lumen	1040lm/m (4000K)
IP	IP33

PACKING

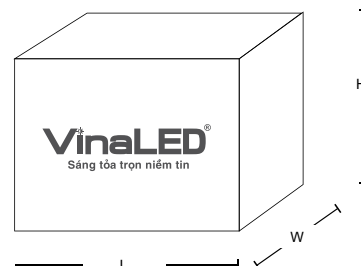
Lenght	Package size	Quantity/Cartons	Carton size
5m	L265x250mm	300m	L480xW330xH320mm



— 1 roll —>

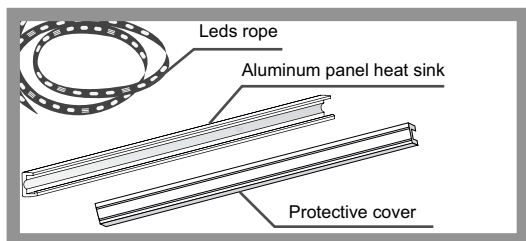


→

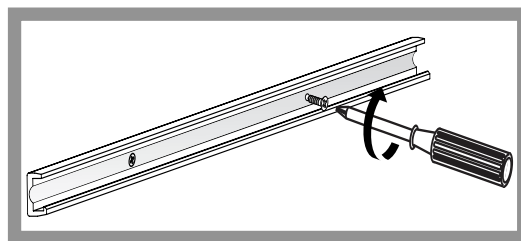


INSTALLATION INSTRUCTIONS

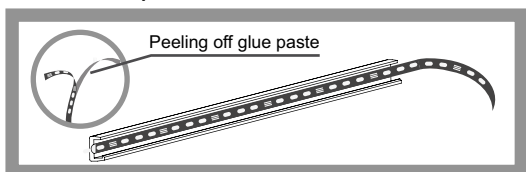
1. Prepare



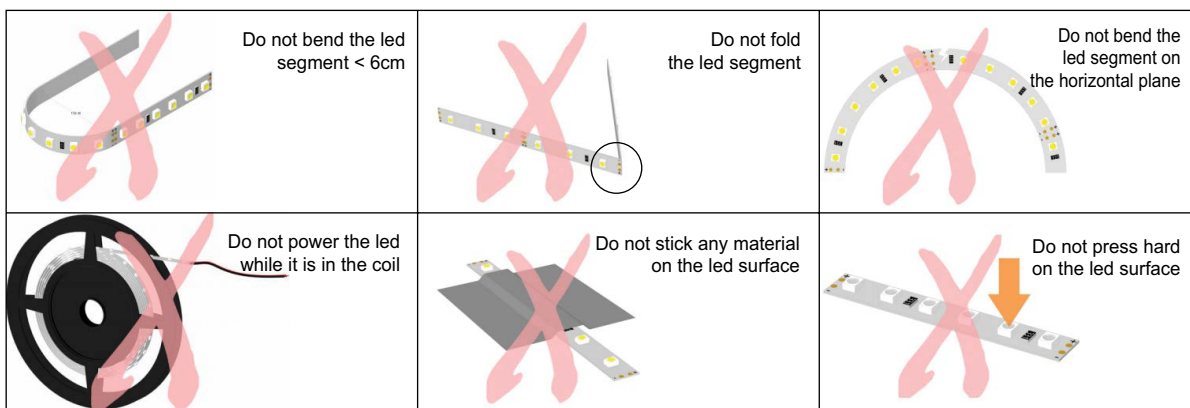
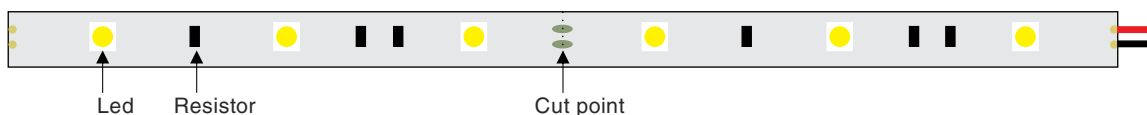
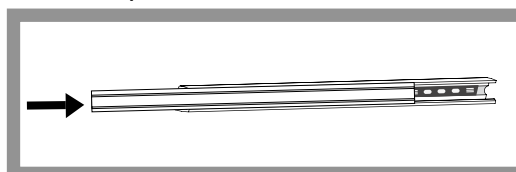
2. Aluminum panel installation heat sink



3. Paste rope led

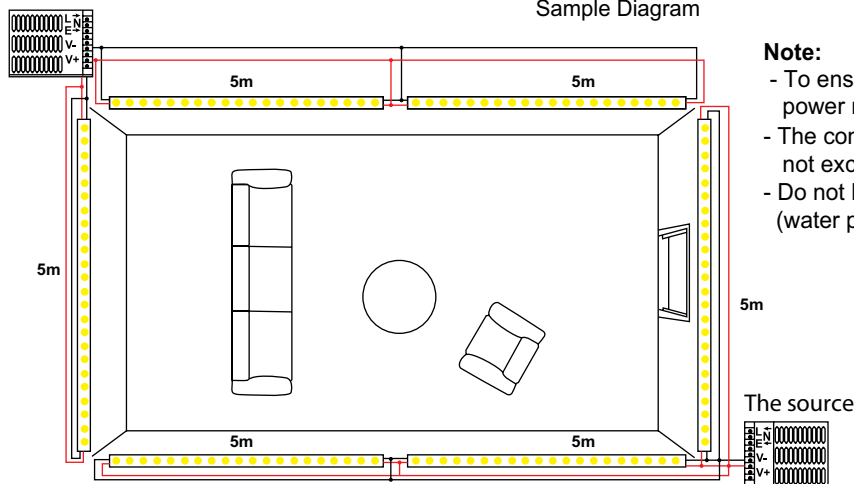


4. Install protective cover



The source

Sample Diagram



Note:

- To ensure uniform brightness on the led strip, power must be supplied every 5m.
- The continuous length of the led strip does not exceed 10m.
- Do not let impurities stick to the led surface (water paint, silicon, iron glue ...)