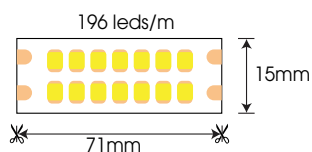


FSB-2835-IP33-L196

RoHS

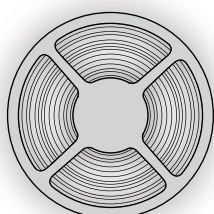


SPECIFICATION

| | |
|---------------|--|
| Model Code | FSB-2835-IP33-L196 |
| Power | 18.9W/m |
| Input Voltage | DC24V |
| PCB Size | W15xT1.5mm |
| Cutting | 71mm |
| Lenght | 5m/roll |
| LED Source | Epistar (Taiwan) |
| CRI | >80 |
| Beam Angle | 120° |
| CCT | 2300K/2700K/3000K/4000K/5000K/6000K/ Red/Green/Blue/Yellow/Orange/Pink/Purple |
| Lumen | 2400lm/m (4000K) |
| IP | IP33 |

PACKING

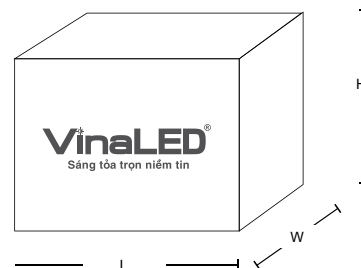
| Lenght | Package size | Quantity/Cartons | Carton size |
|--------|--------------|------------------|------------------|
| 5m | L265x250mm | 300m | L480xW330xH320mm |



— 1 roll →

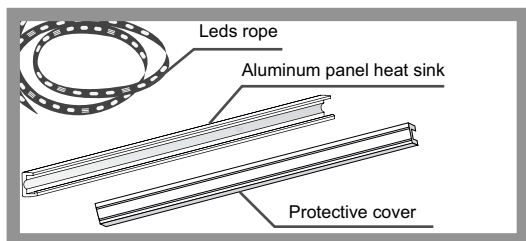


→

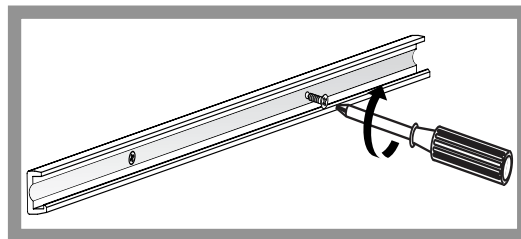


INSTALLATION INSTRUCTIONS

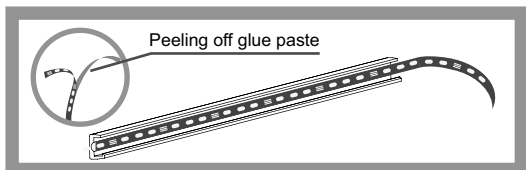
1. Prepare



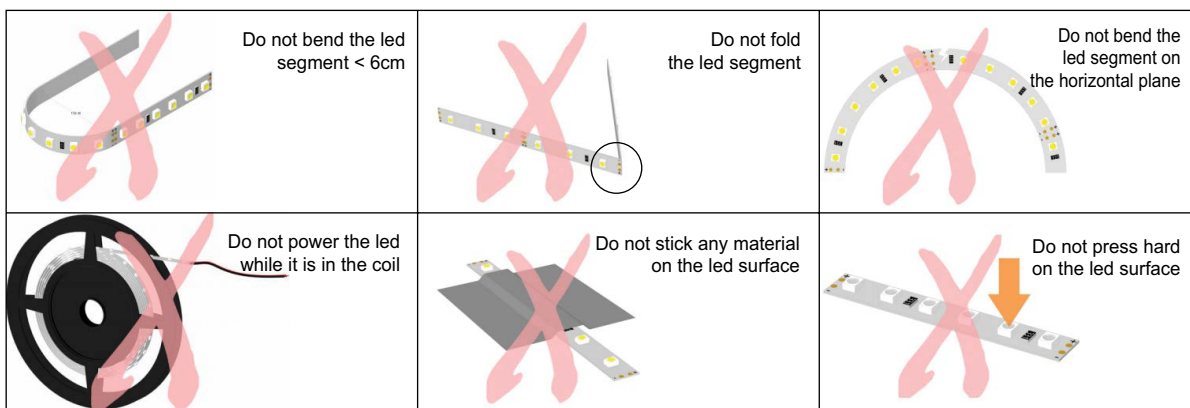
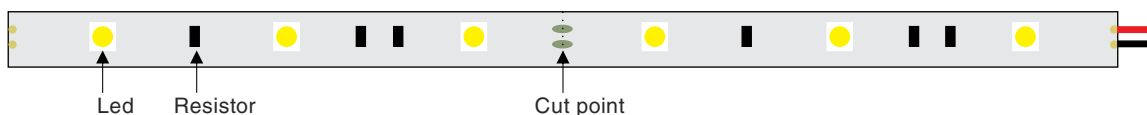
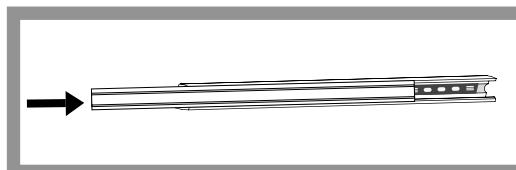
2. Aluminum panel installation heat sink



3. Paste rope led

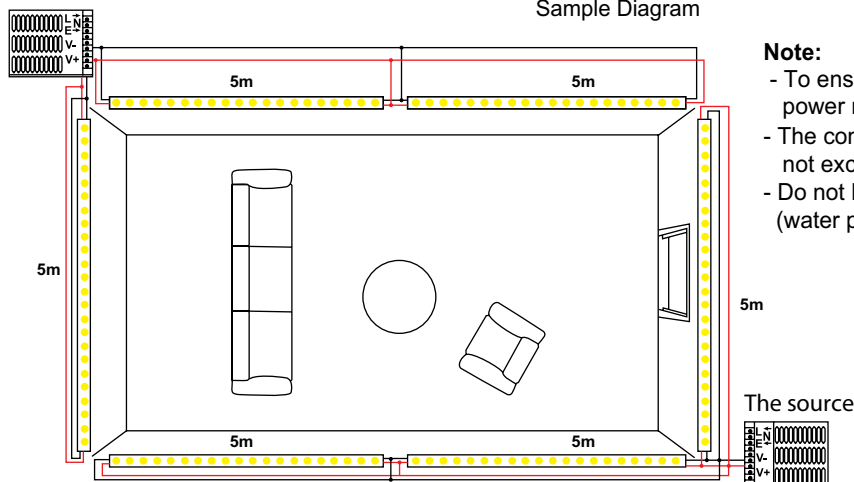


4. Install protective cover



The source

Sample Diagram



Note:

- To ensure uniform brightness on the led strip, power must be supplied every 5m.
- The continuous length of the led strip does not exceed 10m.
- Do not let impurities stick to the led surface (water paint, silicon, iron glue ...)