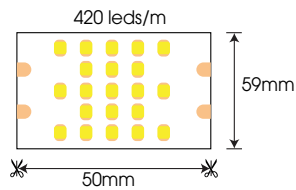


FSB-2835-IP33-L420

RoHS

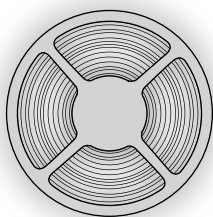


## SPECIFICATION

Model Code	FSB-2835-IP33-L420
Power	30W/m
Input Voltage	DC24V
PCB Size	W59xT1.5mm
Cutting	50mm
Lenght	2.5m/roll
LED Source	Epistar (Taiwan)
CRI	>80
Beam Angle	120°
CCT	2300K/2700K/3000K/4000K/5000K/6000K/ Red/Green/Blue/Yellow/Orange/Pink/Purple
Lumen	3900lm/m (4000K)
IP	IP33

## PACKING

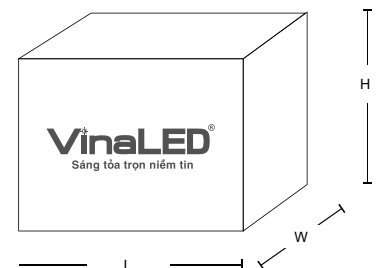
Lenght	Package size	Quantity/Cartons	Carton size
2.5m	L265x250mm	300m	L480xW330xH320mm



— 1 roll →

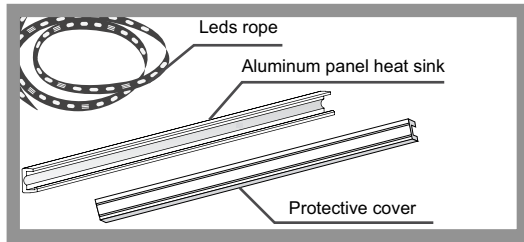


→

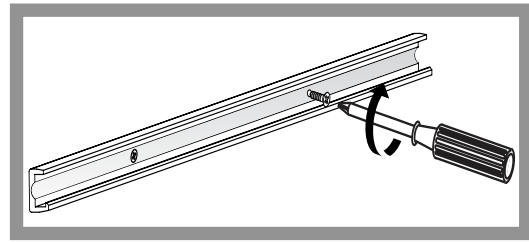


# INSTALLATION INSTRUCTIONS

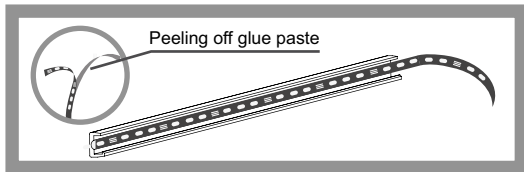
## 1. Prepare



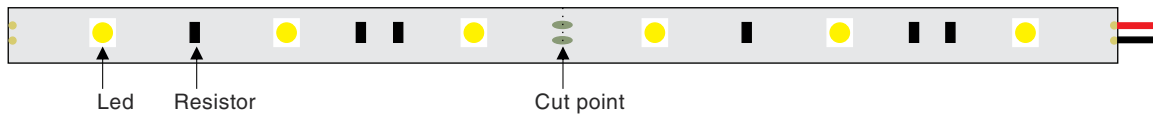
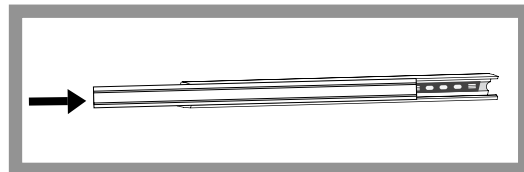
## 2. Aluminum panel installation heat sink



## 3. Paste rope led

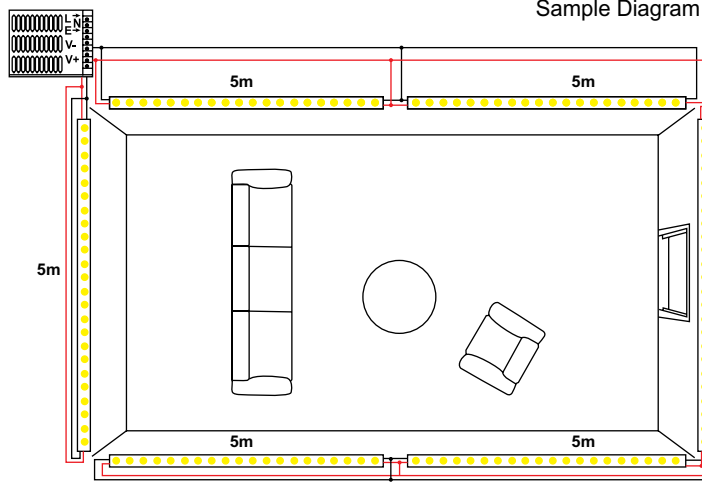


## 4. Install protective cover



<p>Do not bend the led segment &lt; 6cm</p>	<p>Do not fold the led segment</p>	<p>Do not bend the led segment on the horizontal plane</p>
<p>Do not power the led while it is in the coil</p>	<p>Do not stick any material on the led surface</p>	<p>Do not press hard on the led surface</p>

The source



### Note:

- To ensure uniform brightness on the led strip, power must be supplied every 5m.
- The continuous length of the led strip does not exceed 10m.
- Do not let impurities stick to the led surface (water paint, silicon, iron glue ...)

The source