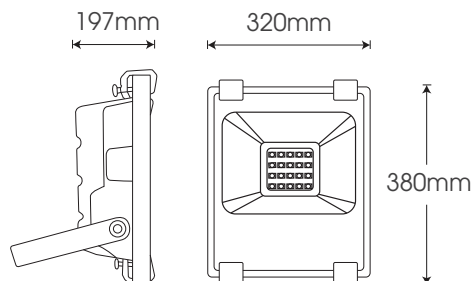




FL-BB200

Black

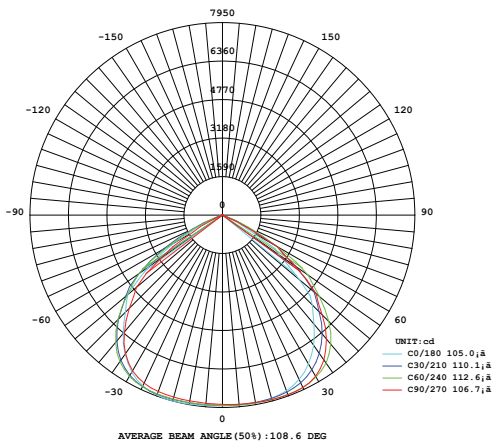


Model	Power	Led source	Beam angle	CRI	CCT	Flux
FL-BB200	200W	Lumileds(USA)	120°	>80	3000K	18570lm
					4000K	20050lm
					5000K	20050lm
					5700K	

LAMP PHOTOMETRIC REPORT

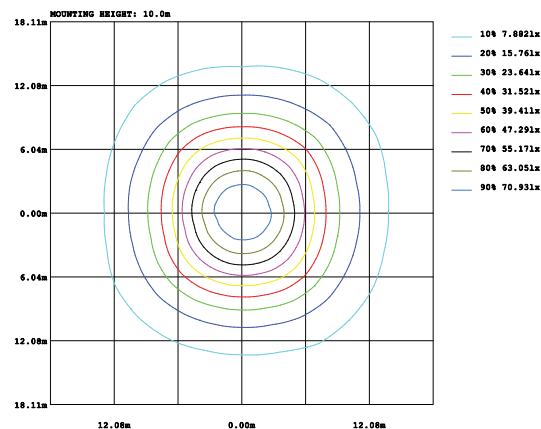
AVERAGE AND CENTER E Figure

ISOLUX DIAGRAM



Height	AVR E	CENTER E	Diameter
1.50m	1374.64lx	3503.11lx	391.04cm
2.00m	773.23lx	1970.50lx	521.39cm
4.00m	193.31lx	492.63lx	1042.78cm
4.50m	152.74lx	389.23lx	1173.13cm
6.00m	85.91lx	233.94lx	1564.17cm

Angle: 105.0deg



Parameter of FL-BB200 | CCT 4000K

INSTALLATION INSTRUCTIONS

PACKING

- Remove frame out of the light
- Attach the bracket fixed to the position to install the lamp
- Install the lights on the fixed racks
- connect the wires to the source 220VAC

Note: Disconnect power, safety checking whole power system before construction.
All radiator parts are not exposed directly to iron or steel

1 pcs

510mm x 240mm x 270mm