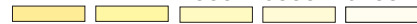


3000K 3500K 4000K 5000K 5700K

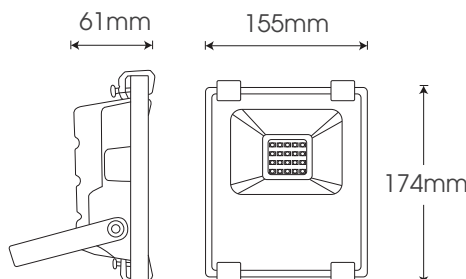
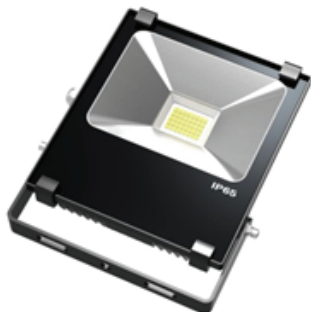


Red Green Blue Yellow Purple



FL-BB20

Black

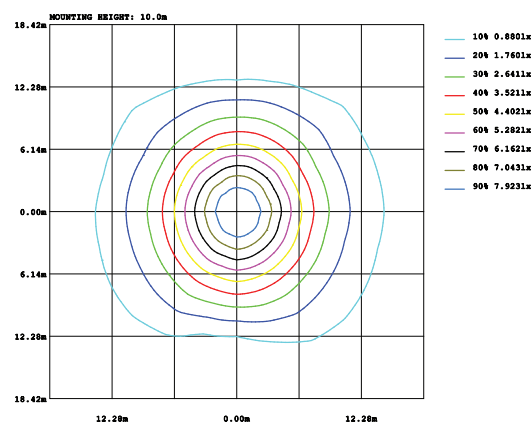
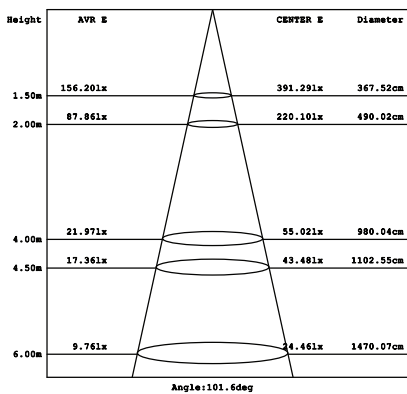
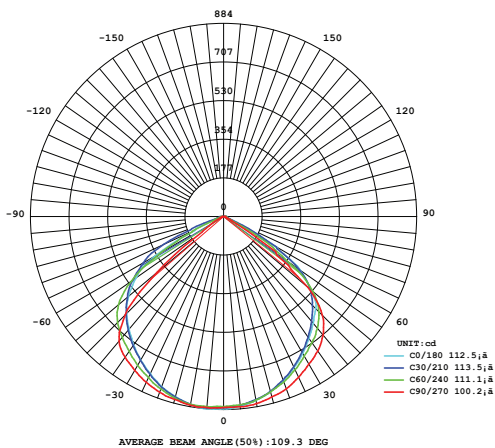


Model	Power	Led source	Beam angle	CRI	CCT	Flux
FL-BB20	20W	Lumileds(USA) (WW/NW/CW); Epileds Taiwan (monochrome)	120°	>80	3000K	2030lm
					4000K	2135lm
					5700K	2135lm

LAMP PHOTOMETRIC REPORT

AVERAGE AND CENTER E Figure

ISOLUX DIAGRAM



Parameter of FL-BB20 | CCT 4000K

INSTALLATION INSTRUCTIONS

PACKING

- Remove frame out of the light
- Attach the bracket fixed to the position to install the lamp
- Install the lights on the fixed racks
- connect the wires to the source 220VAC

Note: Disconnect power, safety checking whole power system before construction.
All radiator parts are not exposed directly to iron or steel

1 pcs
 14 pcs
 227mm x 185mm x 70mm
 470mm x 370mm x 250mm