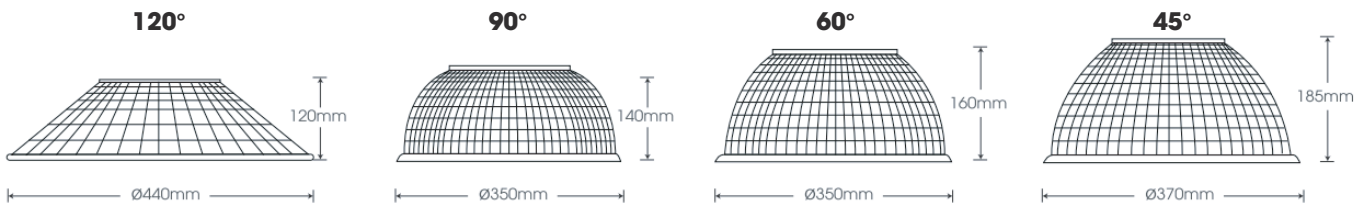
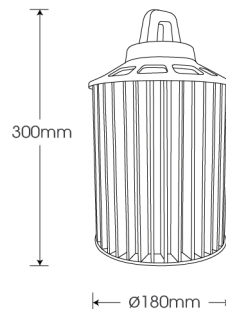


3000K 3500K 4000K 5000K 5700K

>50.000 Hours 100-240 VAC RoHS CE

HB-DS80

Silver

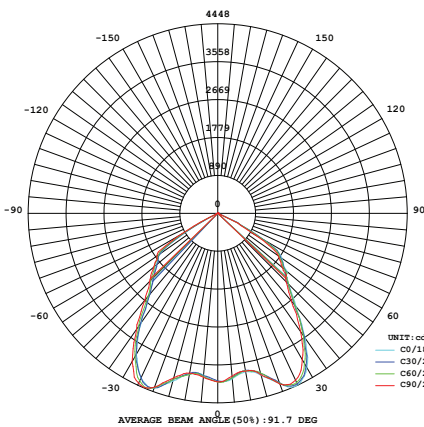


Model	Power	Led source	Beam angle	CCT	CRI	Flux
HB-DS80	80W	Lumileds(USA)	45°/60°/90°/120°	>80	3000K	8515lm
					4000K	9115lm
					5700K	9115lm

LAMP PHOTOMETRIC REPORT

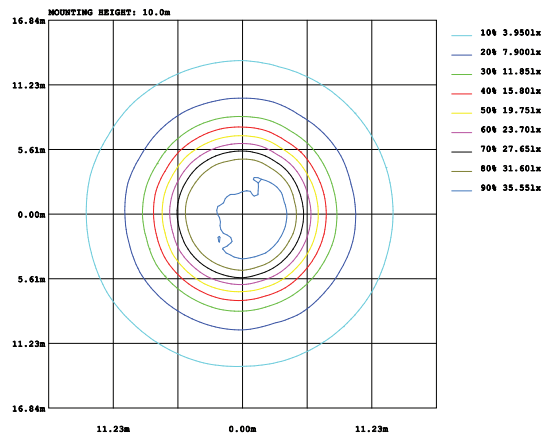
AVERAGE AND CENTER E Figure

ISOLUX DIAGRAM



Height	AVR E	CENTER E	Diameter
1.50m	1060.05lx	1755.73lx	264.60cm
2.00m	596.28lx	987.60lx	352.80cm
4.00m	149.07lx	246.90lx	705.60cm
4.50m	117.78lx	195.08lx	793.80cm
6.00m	66.25lx	109.73lx	1058.39cm

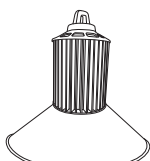
Angle: 82.8deg



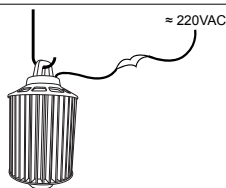
Parameter of HB-DS80 | CCT 4000K

INSTALLATION INSTRUCTIONS

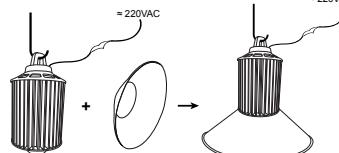
1. Check the chain linkage, make sure the chain link to bear the weight of the lamp
2. Mount the hook on the lamp
3. Hang the lights on the chain hooks have



4. Wiring harness



5. Install reflective headlight on the light



Note:
 • Disconnect power, safety checking whole power system before construction.
 • All radiator parts are not exposed directly to iron or steel

PACKING

