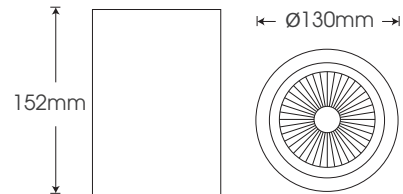
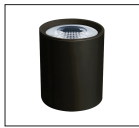




CL-BW20/ CL-BB20

White
Black

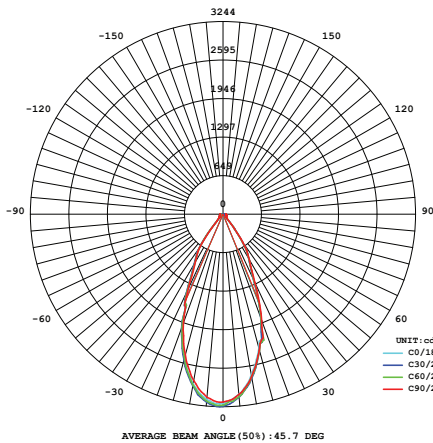


Model	Power	Led source	Beam angle	CCT	CRI	Flux
CL-BW20/ CL-BB20	20W	CREE (USA)	60°	3000K	>80	1965lm
				4000K		2015lm
				5000K		2015lm

LAMP PHOTOMETRIC REPORT

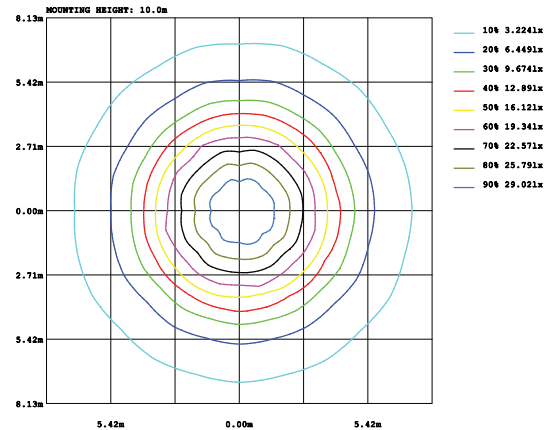
AVERAGE AND CENTER E Figure

ISOLUX DIAGRAM



Height	AVR E	CENTER E	Diameter
1.50m	929.51lx	1417.78lx	126.38cm
2.00m	522.85lx	797.50lx	168.51cm
4.00m	130.71lx	199.38lx	337.01cm
4.50m	103.28lx	157.53lx	379.14cm
6.00m	58.09lx	88.61lx	505.52cm

Angle: 45.7deg



Parameter of CL-BW20/ CL-BB20 | CCT 4000K

INSTALLATION INSTRUCTIONS

PACKING

- Install the lid on the back of the lamp to the ceiling
- Connect wires with 220VAC power
- Install the lamp on the fixed lid

Note: Disconnect power, safety checking whole power system before construction. All radiator parts are not exposed directly to iron or steel