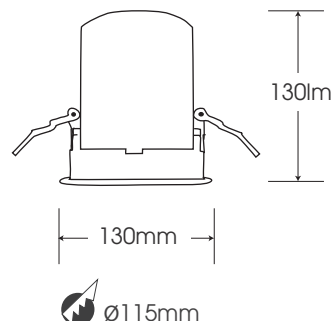




2700K 3000K 3500K 4000K 5000K 5700K

DLS-PW20/DLS-PB20

White

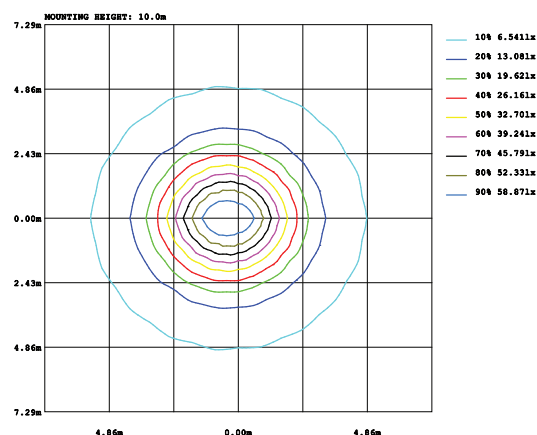
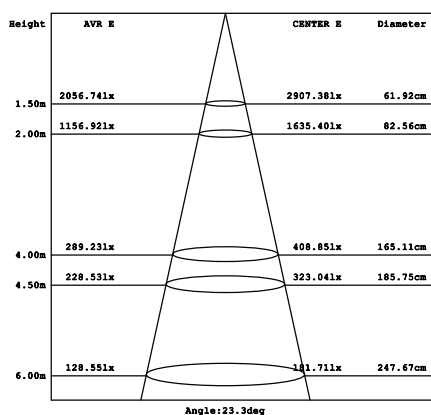
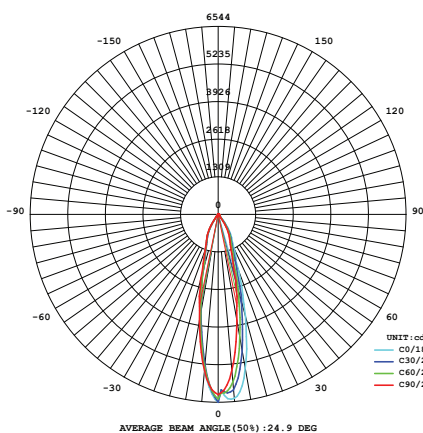


Model	Power	Led source	Beam angle	CCT	CRI	Flux
DLS-PW20/ DLS-PB20	20W	CREE (USA)	24°/36°	3000K	>80	1680lm
					>90	1410lm
				4000K	>80	1735lm
					>90	1490lm
				5000K	>80	1735lm

LAMP PHOTOMETRIC REPORT

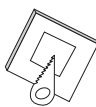
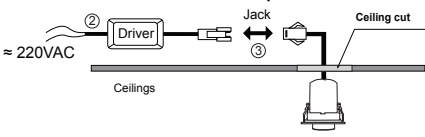
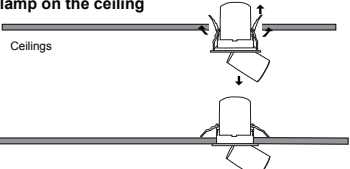
AVERAGE AND CENTER E Figure

ISOLUX DIAGRAM



Parameter of DL-PW20/DL-PB20 | CCT 4000K

INSTALLATION INSTRUCTIONS

- Ceiling cut**

 Size cut: Ø170mm
- Connected Led Driver with 220VAC power**
3. Connected Led Driver with lamp

 ≈ 220VAC → Driver → Jack → Ceiling cut
- 4. Put the lamp on the ceiling**


PACKING