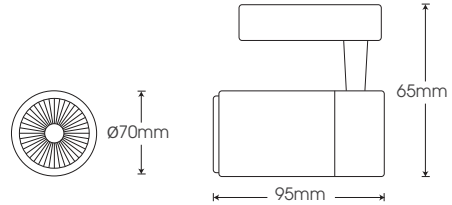


## TR-DW10/TR-DB10

White

Black

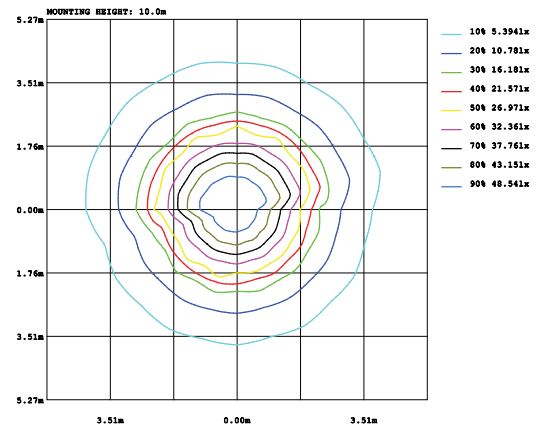
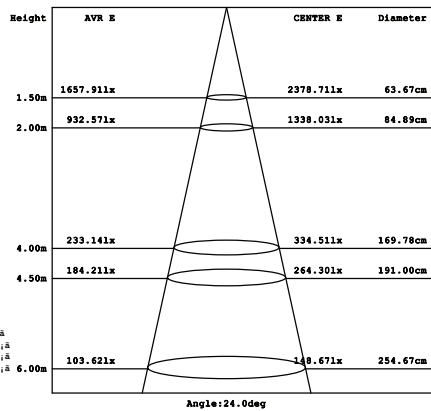
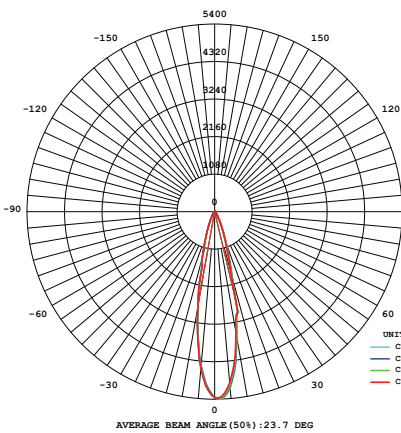


Model	Power	Led source	Beam angle	CCT	CRI	Flux
TR-DW10/ TR-DB10	10W	CREE (USA)	24°/38°	3000K	>80	1130lm
					>90	960lm
				4000K	>80	1195lm
					>90	1020lm
				5000K	>80	1195lm

### LAMP PHOTOMETRIC REPORT

### AVERAGE AND CENTER E Figure

### ISOLUX DIAGRAM



Parameter of TR-DW10/TR-DB10 | CCT 4000K

### INSTALLATION INSTRUCTIONS

- Fixed a head on the ceiling, wire connectors with wire connection point

Ceiling / wiring box  
Wire connection point  
Bulong  
Lid cover the connector box
- Mount the rails on the fixed head

  - Always ensure that the rails are parallel to the wall
  - Attach the bulong along the rails to firmly fixed
- Put the lamp on the rails

Note: Disconnect power, safety checking whole power system before construction.  
All radiator parts are not exposed directly to iron or steel

### PACKING

1 pcs

20 pcs

90mm x 155mm x 155mm

470mm x 370mm x 250mm