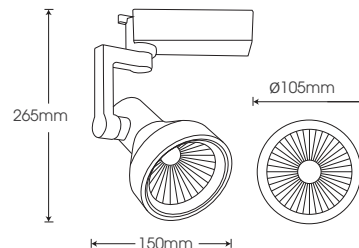


TR-EW30/TR-EB30/TR-EG30

- White
- Black
- Grey

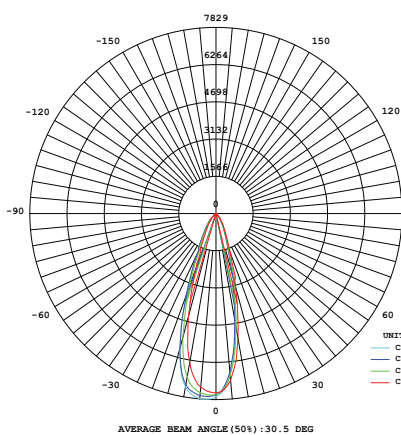


Model	Power	Led source	Beam angle	CCT	CRI	Flux
TR-EW30/ TR-EB30/ TR-EG30	30W	CREE (USA)	36°	3000K	>80	2555lm
					>90	1955lm
				4000K	>80	2840lm
					>90	2110lm
				5000K	>80	2840lm

LAMP PHOTOMETRIC REPORT

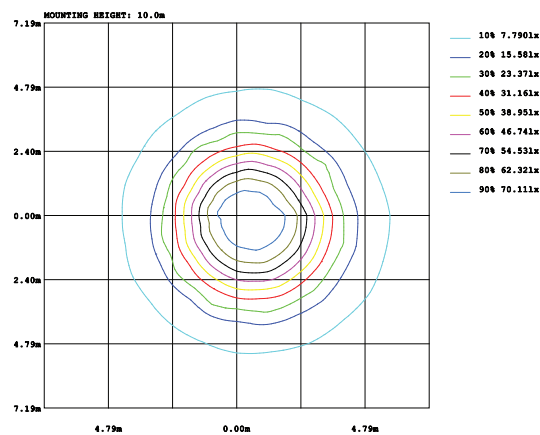
AVERAGE AND CENTER E Figure

ISOLUX DIAGRAM



Height	AVR E	CENTER E	Diameter
1.50m	2394.36lx	3429.42lx	81.63cm
2.00m	1346.83lx	1929.05lx	108.85cm
4.00m	336.71lx	482.26lx	217.69cm
4.50m	266.04lx	381.05lx	244.90cm
6.00m	149.65lx	214.34lx	326.54cm

Angle: 30.4deg



Parameter of TR-EW30/TR-EB30/TR-EG30 | CCT 4000K

INSTALLATION INSTRUCTIONS

PACKING

- Fixed a head on the ceiling, wire connectors with wire connection point
- Mount the rails on the fixed head
 - Always ensure that the rails are parallel to the wall
 - Attach the bulong along the rails to firmly fixed
- Put the lamp on the rails

Note: Disconnect power, safety checking whole power system before construction.
 All radiator parts are not exposed directly to iron or steel

1 pcs (individual box: 120mm x 210mm x 210mm)
 5 pcs (bulk box: 470mm x 370mm x 250mm)