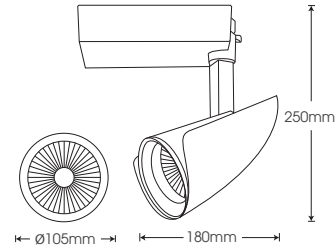


TR-GW35/TR-GB35/TR-GG35

- White
- Black
- Grey

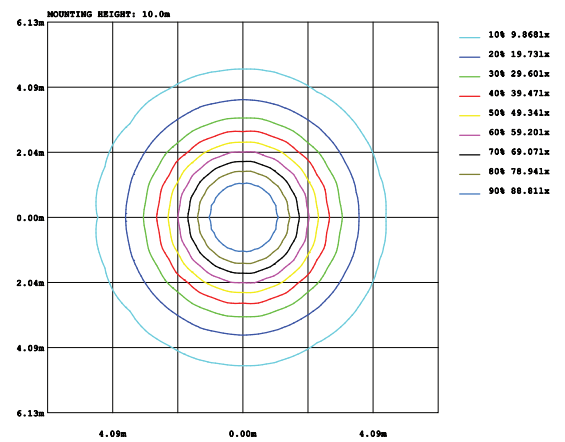
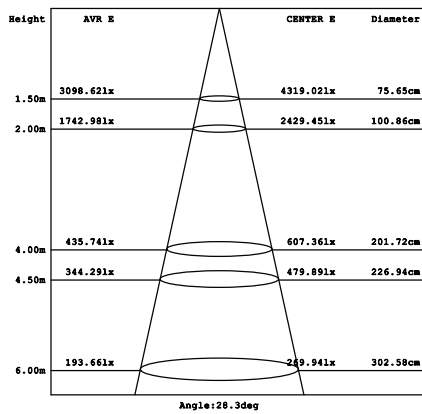
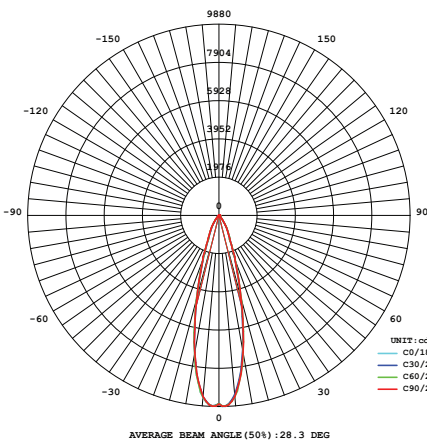


Model	Power	Led source	Beam angle	CCT	CRI	Flux
TR-GW35/ TR-GB35/ TR-GG35	35W	CREE (USA)	24°/38°	3000K	>80	3080lm
					>90	2690lm
				4000K	>80	3210lm
					>90	2785lm
				5000K	>80	3210lm

LAMP PHOTOMETRIC REPORT

AVERAGE AND CENTER E Figure

ISOLUX DIAGRAM



Parameter of TR-GW35/TR-GB35/TR-GG35 | CCT 4000K

INSTALLATION INSTRUCTIONS

PACKING

- Fixed a head on the ceiling, wire connectors with wire connection point
- Mount the rails on the fixed head

 - Always ensure that the rails are parallel to the wall
 - Attach the bulong along the rails to firmly fixed
- Put the lamp on the rails

Note: Disconnect power, safety checking whole power system before construction. All radiator parts are not exposed directly to iron or steel